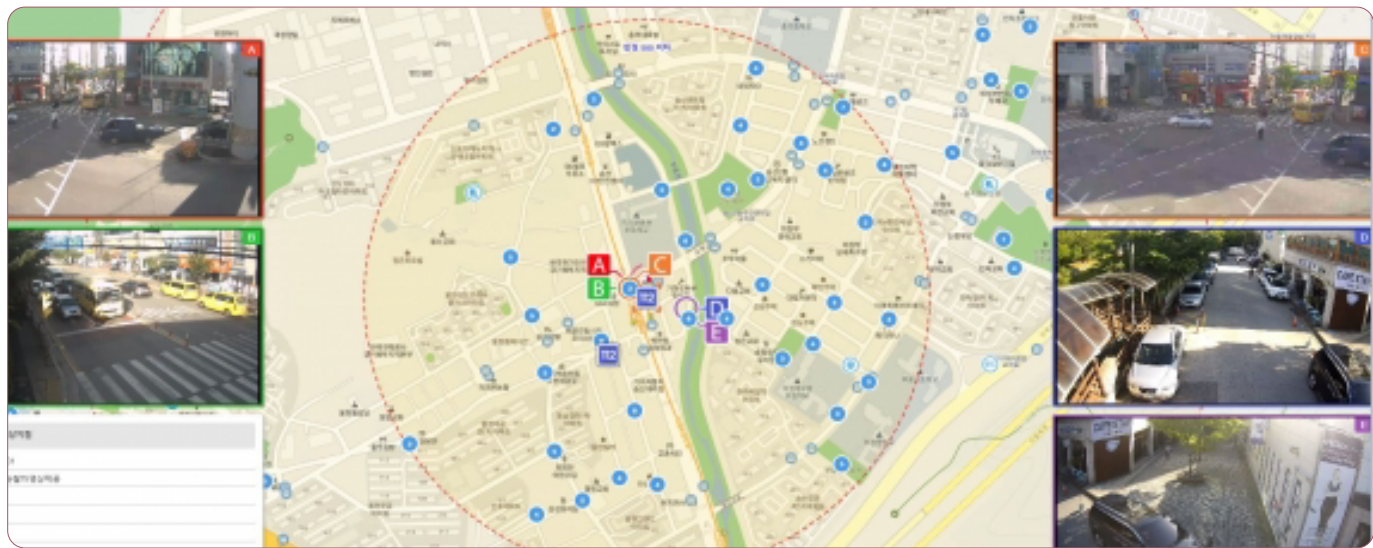


Smart City Integrated Platform

The Smart City Integrated Platform is a monitoring and operations support technology that integrates various incidents and accident data occurring in cities with CCTV footage for comprehensive management.

By linking traffic information systems and enabling real-time interaction, the platform enhances the efficiency of urban control systems. Additionally, it serves as a core smart city solution that supports coordinated emergency response systems among local governments, police, and fire departments during citywide incidents.



▲ The Smart City Integrated Platform displays incident detection, accident reports, and CCTV footage on a single interface.

Issues to Tackle

- ❑ Inefficient operations due to separately-managed CCTV monitoring systems for crime prevention, disaster response, and traffic control.
- ❑ Need for a standardized monitoring system to rapidly detect various incidents and ensure a coordinated response among relevant authorities.

Expected Benefits

- ❑ Enhancing urban control efficiency by integrating and linking various CCTV systems and incident data on a single monitoring interface.
- ❑ Establishing a joint emergency response system between local governments, police, and fire departments for disasters, fires, and crimes.

Key Services

- Provides standardized and integrated information on safety, disaster prevention, traffic, environment, energy, and facilities in urban areas through a single screen:
 - Safety: Emergency bells, safety warnings, 112 emergency calls, safety guidance for vulnerable groups, and drills.
 - Disaster Prevention: 119 calls, flood alerts, rescue operations, fires, typhoons, underpass flooding, and water level warnings.
 - Traffic: Accidents, stalled vehicles, road closures, congestion, and bus detours.
 - Environment: Air and water pollution data.
 - Energy: Building energy alerts, commercial energy data.
 - Facilities: CCTV status, facility breakdowns, structural damage, water leaks.
- During emergencies, connects with systems of relevant agencies (police, fire departments) to share incident locations, event details, and live CCTV footage for a coordinated responses.

Use Cases

- In April 2016, Daejeon Metropolitan City integrated 112 (police) and 119 (fire) services using the Smart City Integrated Platform, resulting in a 6% decrease in crime rates and a 15% increase in fire truck arrival rates within 7 minutes.
- As of September 2024, 233 local governments nationwide are utilizing the Smart City Integrated Platform.
- Under the South Korean government's (MOLIT) global cooperation program (K-City Network), the Smart City Integrated Platform has been introduced in Gaziantep, Türkiye (2021), Mukdahan, Thailand (2022), and Rangpur, Bangladesh (2023).

Key Components

Configuration



Platform linkage · expansion

Smart City Safety Network Services



- The Smart Urban Safety Network extends connectivity across national safety agencies, including police command centers, fire response centers, the Ministry of Justice's surveillance hub, and disaster safety control rooms.
- It provides real-time CCTV footage, wanted vehicle searches, military operation control and training support, electronic ankle monitor violation tracking, missing child and dementia patient location assistance, and SOS escort support for safe return home.

Key Technologies

1. Integrated Control System

- Configurable monitoring dashboards with real-time event display features.
- Core functions include surveillance, reporting, address search, and distance measurement tools.

2. Integrated Interoperability System

- Inter-agency system integration and data exchange settings management between internal systems.

3. Comprehensive Operations Management

- Common Code Management for External System Integration

POINT Expanding national safety networks: Includes 112 and 119 dispatch coordination, real-time video support for disaster response, protection for children and elderly with dementia, wanted vehicle search, women's safety support, and private security collaboration.

4. Provision of External Information, Including Building Blueprints

- Provides building blueprints for emergency responders during crisis situations.

Application Service

Safe Return Home Service

- When a citizen requests the "Safe Return Home Service" through a smartphone app, nearby CCTV cameras monitor their journey until they arrive at their destination.
- In case of an emergency, the system alerts police for immediate dispatch.



Technology Companies

DANUSYS
www.danusys.com

GEOMEXSOF
www.geomex.co.kr

KT
www.kt.com

LG CNS
www.lgcns.com

METABUILD
www.metabuild.co.kr

SMART CITY ASSOCIATION
www.smartcity.or.kr

